








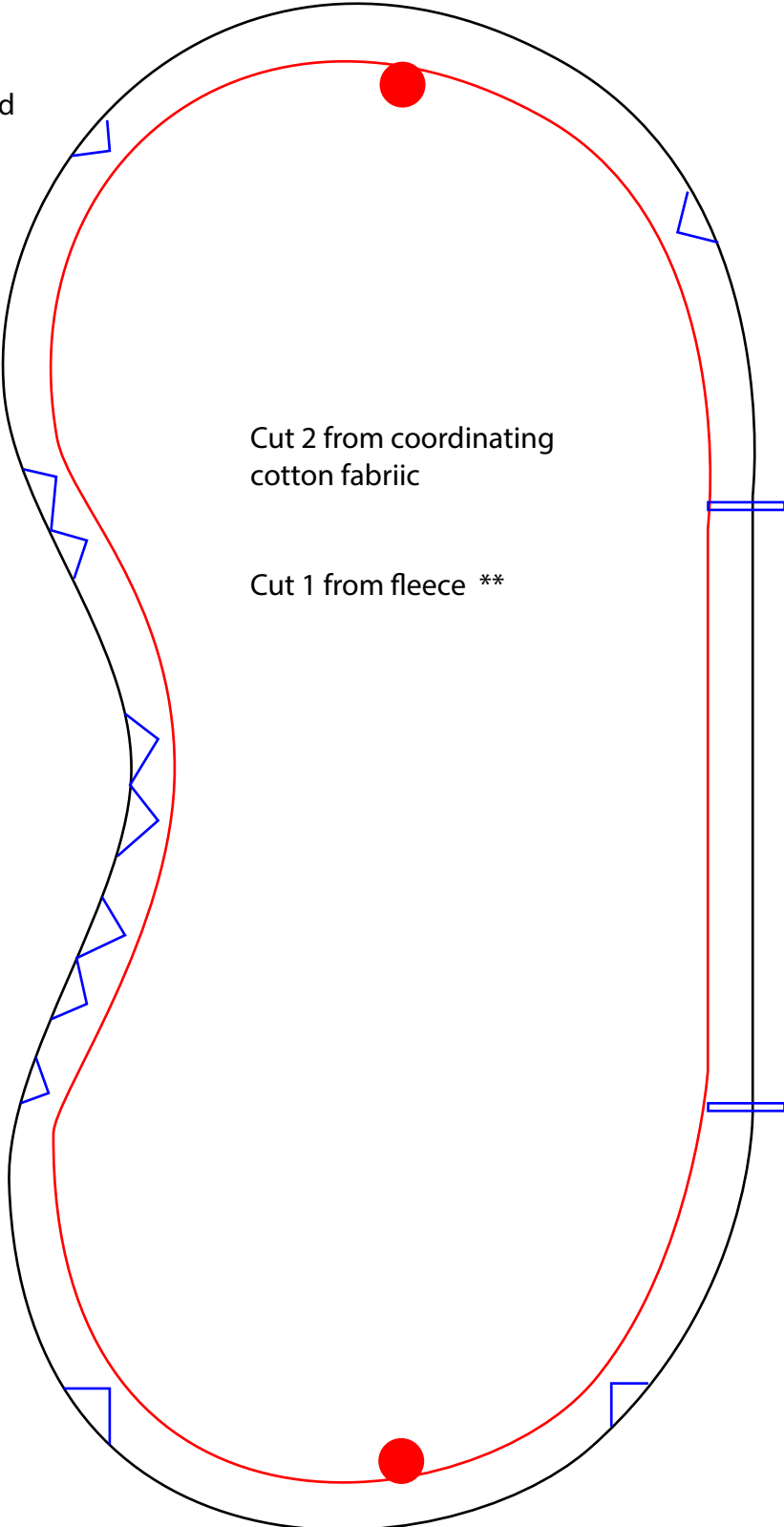
Sleep Mask Pattern

Try it - Like it - Create it
tryit-likeit.com

Materials:

- 2 cotton fat quarters
- scrap fleece
- Elastic
- scissors
- straight pins
- sewing machine
- coordinating thread
- iron

-  elastic band attaches here
-  start and stop of machine sewing
-  cut after machine sewing to make turning inside out easier
-  sew along this line
-  cut along this line



** fleece can be replaced with a recycled terry cloth towel, flannel, or fleece batting.